

Marine Scotland Science

NOTICE TO MARINERS

Moray Firth Atlantic Salmon Tracking Project

AS LAID MOORING POSITIONS

Marine Scotland Science have installed 24 moorings in the Moray Firth area of the East coast of Scotland. These are deployed in double arrays at the Cromarty Sutors and Chanonry Point (Figures 1 – 3 attached). Deployment coordinates have been plotted using WGS84 (Table 1). A photo of a mooring is provided in Figure 4.

These moorings hold research equipment that support hydrophone receivers to log the presence of adult Atlantic salmon tagged with acoustic ID tag transmitters. These moorings are sub-surface projecting a maximum of 5 metres from the seabed, to minimise interference with shipping. They are weighted to the sea bed using 70kg clump weights. The arrays should be in place from 8th July until late September 2018, however the recovery date(s) are weather dependant. At the end of the deployment period, all the moorings will be recovered using a ROV with the complete assemblies being removed.

All enquiries in relation to these deployments should be made to Stuart Wallace (stuart.wallace@gov.scot) or Campbell Pert (campbell.pert@gov.scot) at Marine Scotland Science.

Table 1: Mooring Location Details

Mooring Number	Site name	DegDecMin LON	DegDecMin LAT	Water Depth (m)
1	Inner Chanonry	4° 5.352' W	57° 34.490' N	19
2	Inner Chanonry	4° 5.146' W	57° 34.559' N	37
3	Inner Chanonry	4° 4.930' W	57° 34.634' N	25
4	Inner Chanonry	4° 4.724' W	57° 34.706' N	20
5	Inner Chanonry	4° 4.513' W	57° 34.776' N	16
6	Inner Chanonry	4° 4.306' W	57° 34.850' N	4
7	Outer Chanonry	4° 4.716' W	57° 34.930' N	23
8	Outer Chanonry	4° 4.931' W	57° 34.878' N	39
9	Outer Chanonry	4° 5.152' W	57° 34.819' N	34
10	Outer Chanonry	4° 5.381' W	57° 34.759' N	33
11	Outer Chanonry	4° 5.605' W	57° 34.701' N	17
12	Outer Chanonry	4° 5.777' W	57° 34.651' N	3
13	Outer Sutors	3° 59.523' W	57° 40.713' N	4
14	Outer Sutors	3° 59.473' W	57° 40.828' N	9
15	Outer Sutors	3° 59.398' W	57° 40.945' N	18
16	Outer Sutors	3° 59.320' W	57° 41.084' N	48
17	Outer Sutors	3° 59.243' W	57° 41.210' N	15
18	Outer Sutors	3° 59.160' W	57° 41.341' N	13
19	Outer Sutors	3° 59.093' W	57° 41.449' N	4
20	Inner Sutors	3° 59.661' W	57° 41.406' N	11
21	Inner Sutors	3° 59.739' W	57° 41.279' N	41
22	Inner Sutors	3° 59.811' W	57° 41.154' N	48
23	Inner Sutors	3° 59.890' W	57° 41.022' N	28
24	Inner Sutors	3° 59.958' W	57° 40.893' N	6

Figure 1: Location Overview

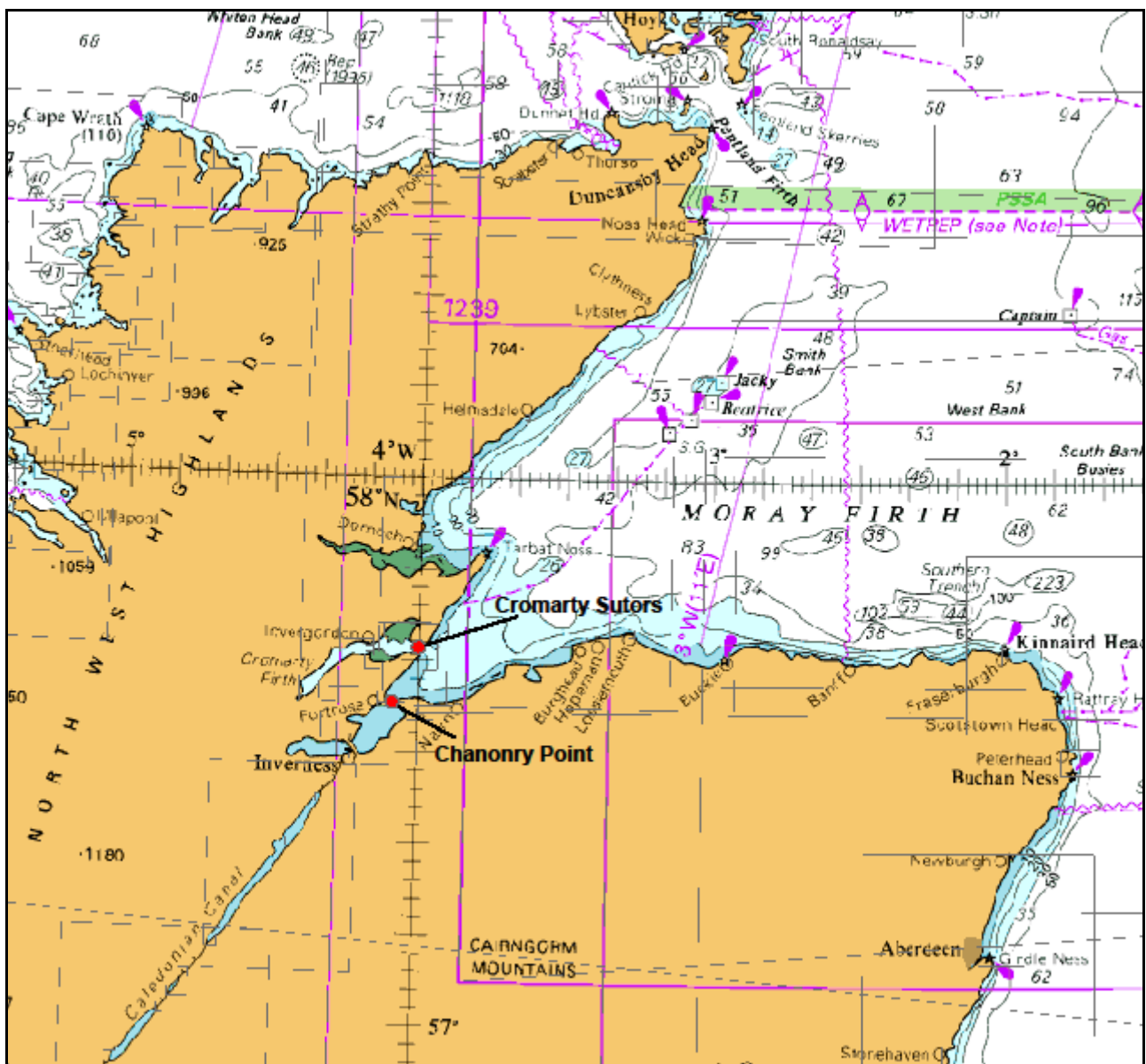


Figure 2: Chanoroy Point Moorings

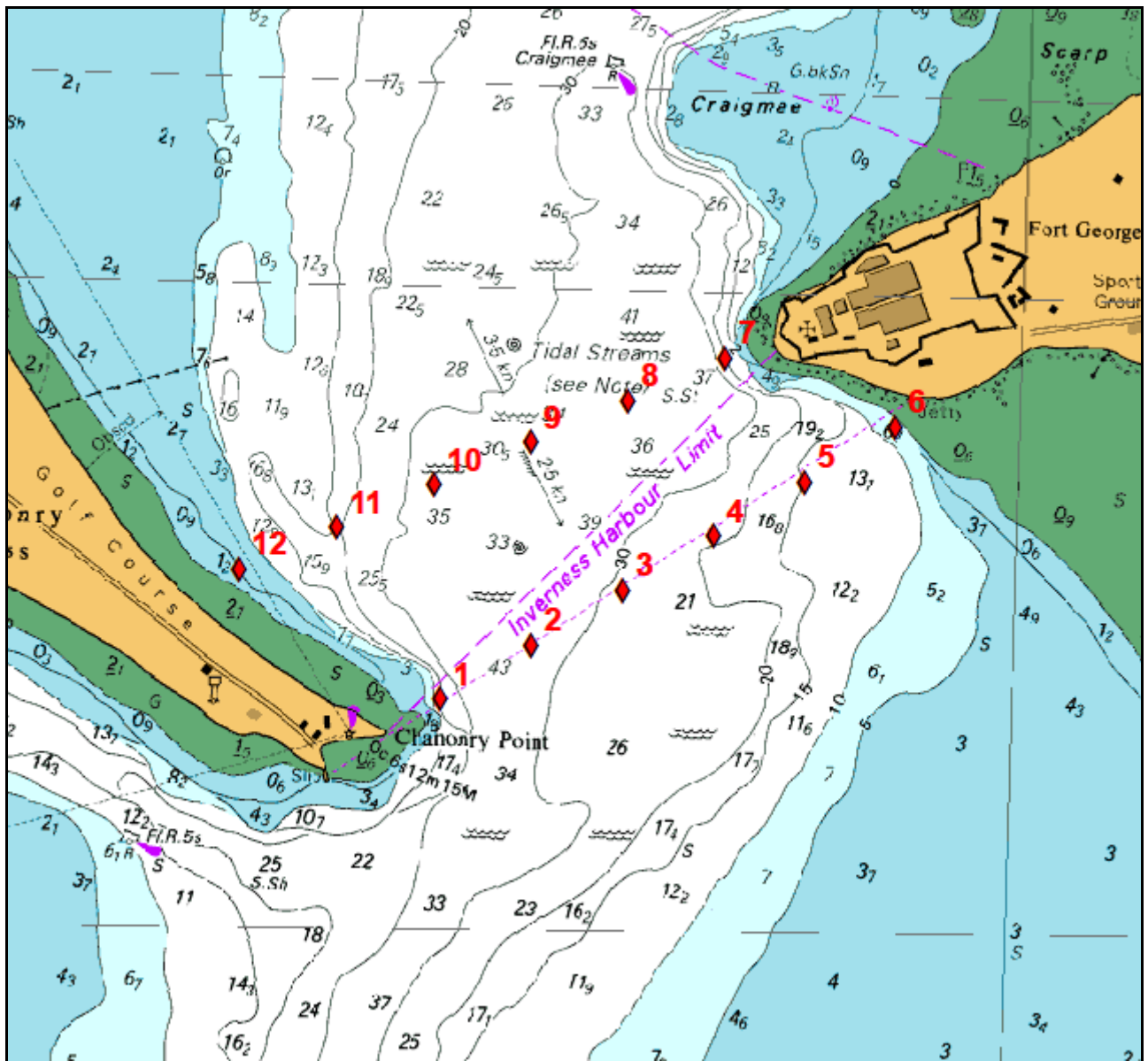


Figure 3: Cromarty Sutors Moorings

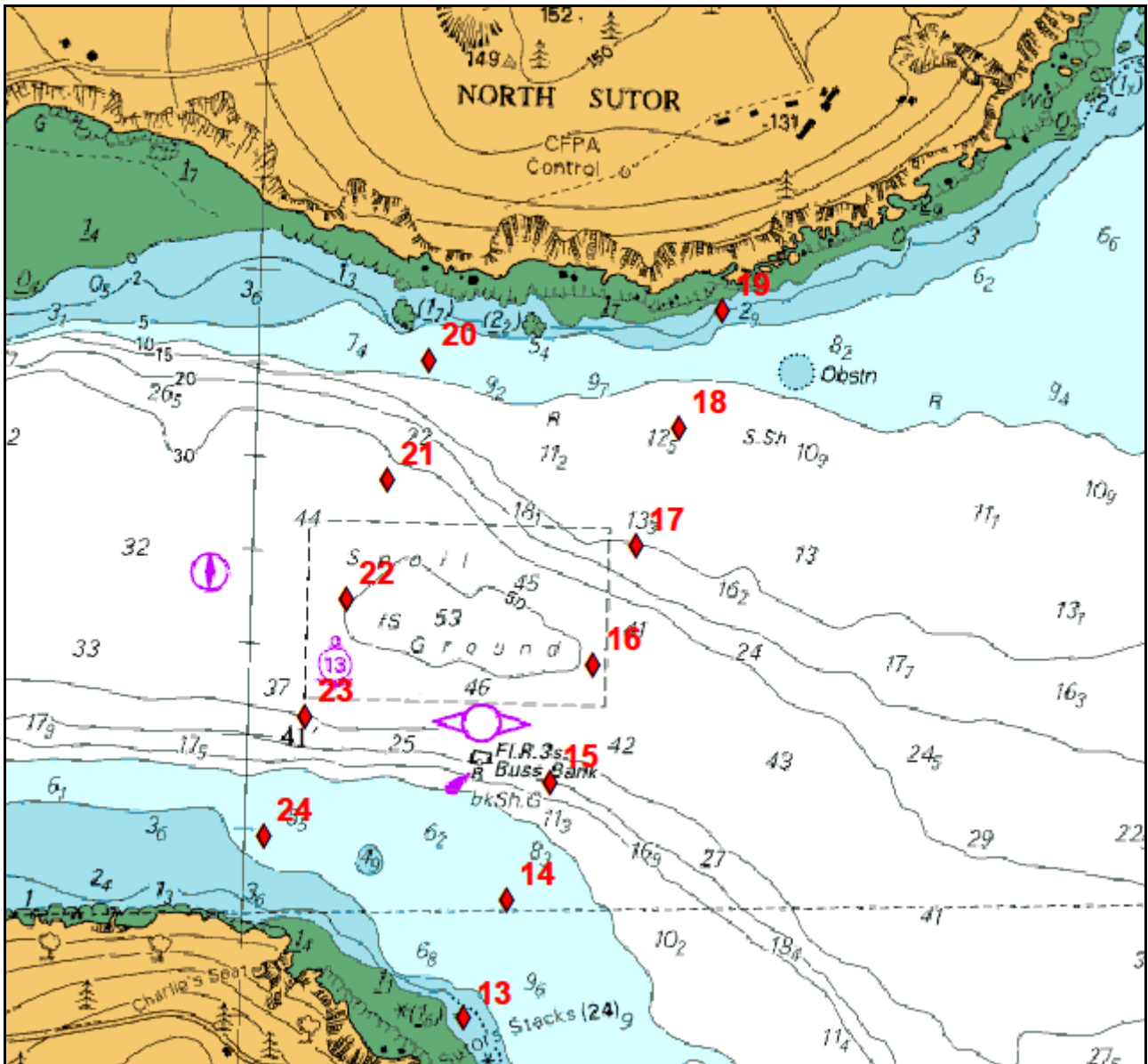


Figure 4: Mooring Design

