

# UNIVERSITY OF ABERDEEN

## NOTICE TO MARINERS

No. UoA/10/2018

### MORAY FIRTH, CROMARTY FIRTH, INVERNESS FIRTH, SCOTLAND

Date of notice: 11<sup>th</sup> September, 2018

Mariners are advised that, further to notice UoA/07/2018, the University of Aberdeen has **removed** the moorings listed in table 1. Additionally, the University has **serviced** the moorings listed in table 2, and **reinstalled them in their current locations**. Moorings listed in table 3 are **still to be serviced**; these works will take place in late September or early October. See also chart extracts at the foot of this notice:

Table 1. Moorings removed.

Name	Coordinates (WGS84 datum)		Characteristics
117	57° 41.155' N	003° 59.883' W	Subsurface.
125	57° 40.866' N	003° 59.667' W	Subsurface.
126	57° 40.925' N	004° 00.391' W	Subsurface.
136	57° 35.479' N	004° 04.264' W	Subsurface.
141	57° 41.430' N	004° 00.146' W	Subsurface.
204	57° 34.551' N	004° 04.905' W	Subsurface.
206	57° 34.081' N	004° 03.672' W	Subsurface.
207	57° 33.903' N	004° 05.034' W	Subsurface.
210	57° 30.657' N	004° 13.030' W	Subsurface.
211	57° 30.339' N	004° 12.102' W	Subsurface.
212	57° 30.125' N	004° 13.389' W	Subsurface.
213	57° 29.873' N	004° 14.884' W	Subsurface.
214	57° 29.816' N	004° 16.191' W	Subsurface.
215	57° 41.078' N	003° 59.172' W	Subsurface.

Table 2. Moorings serviced and returned to their existing location.

Name	Coordinates (WGS84 datum)		Characteristics
1	57° 41.421' N	003° 58.951' W	Surface marked (NB50 buoy, red)
2	57° 35.118' N	004° 05.875' W	Surface marked (NB50 buoy, red)

Table 3. Moorings in situ and still to be serviced.

Name	Coordinates (WGS84 datum)		Characteristics
3	57° 44.073' N	003° 19.776' W	Surface marked (dhan, 12' aluminium & RADAR reflector)
4	57° 41.357' N	003° 05.547' W	Surface marked (NB50 buoy, red)

The moorings support sound recording equipment, and acoustic loggers that record echolocation clicks of dolphins and porpoises (see images of devices at the foot of this notice).

A further Notice to Mariners will be issued in the event of additional operations on the above listed mooring locations.

For information and enquiries please contact:

Tim Candido Barton,

Lighthouse Field Station, University of Aberdeen, George St., Cromarty, Ross-shire, IV11 8YL.

+44 (0)1381 600548.

[t.r.barton@abdn.ac.uk](mailto:t.r.barton@abdn.ac.uk)



Acoustic logger  
(600 x 95mm)

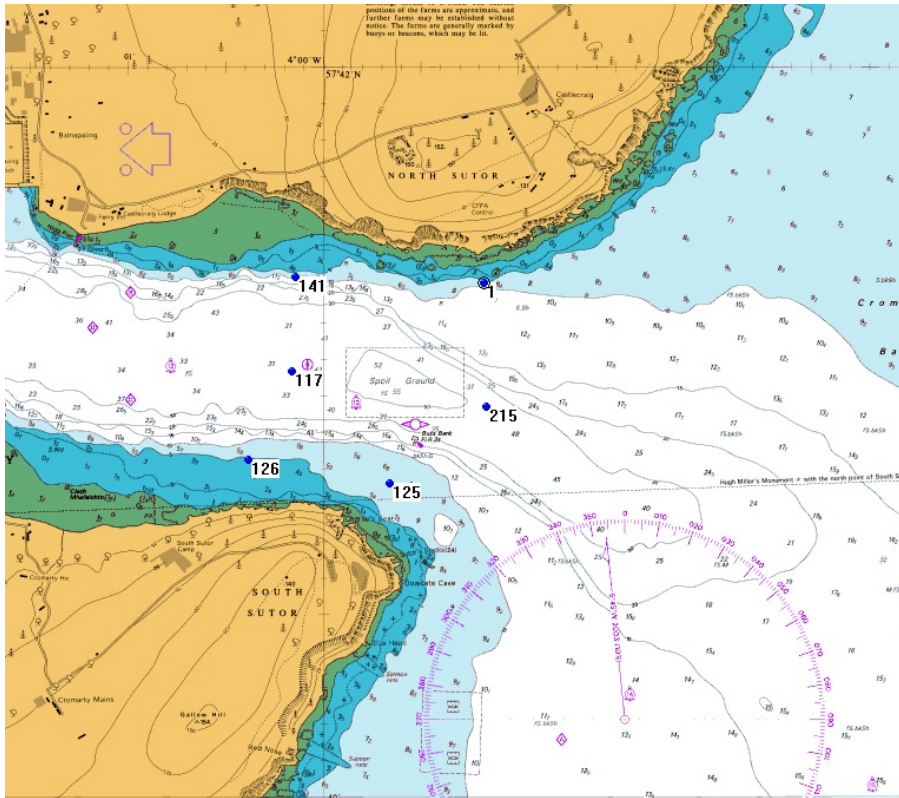


Sound recorder  
(900 x 170mm)

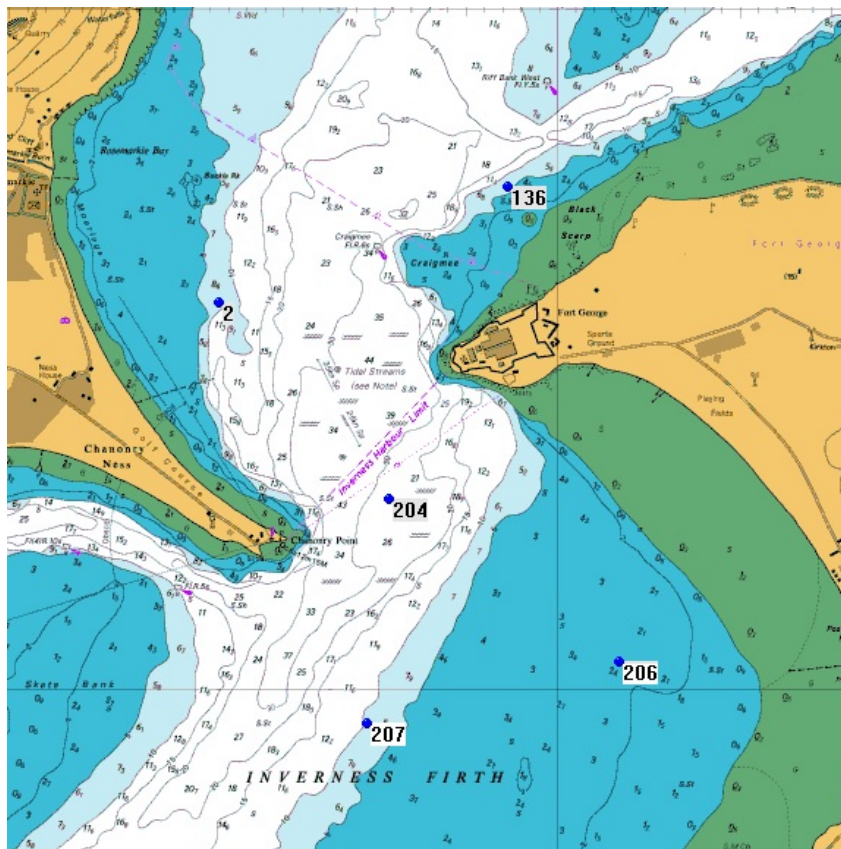


Sound recorder  
(200 x 60mm)

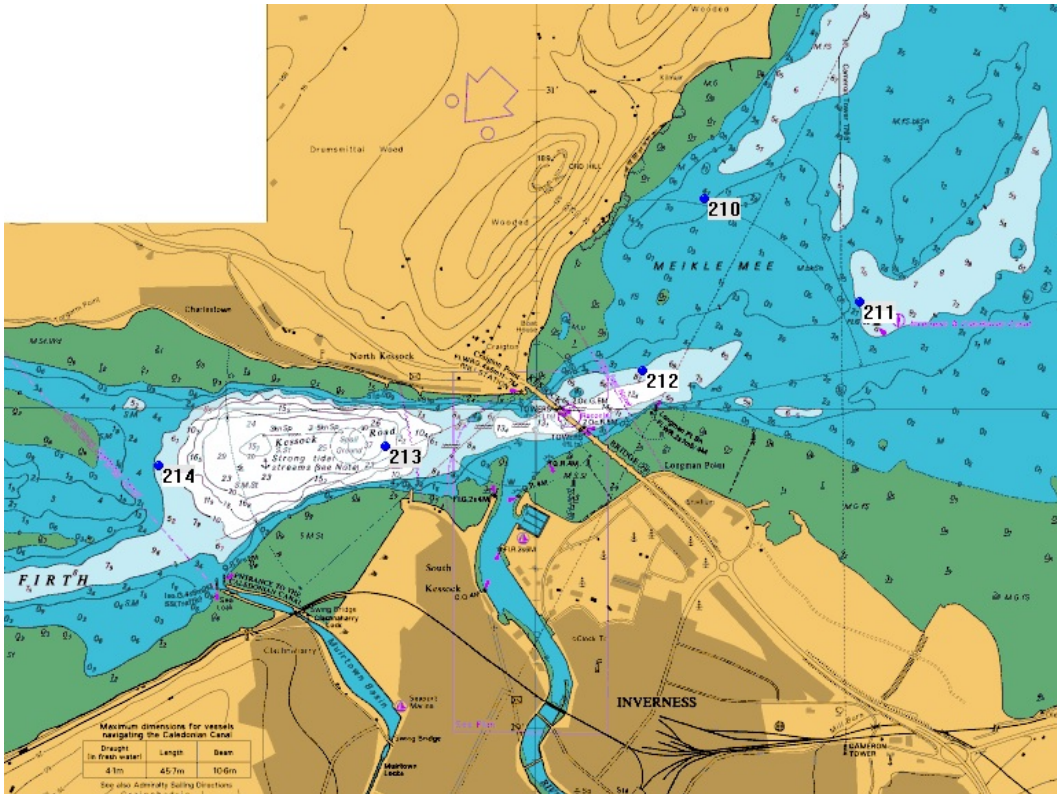
Examples of equipment which the above moorings support.



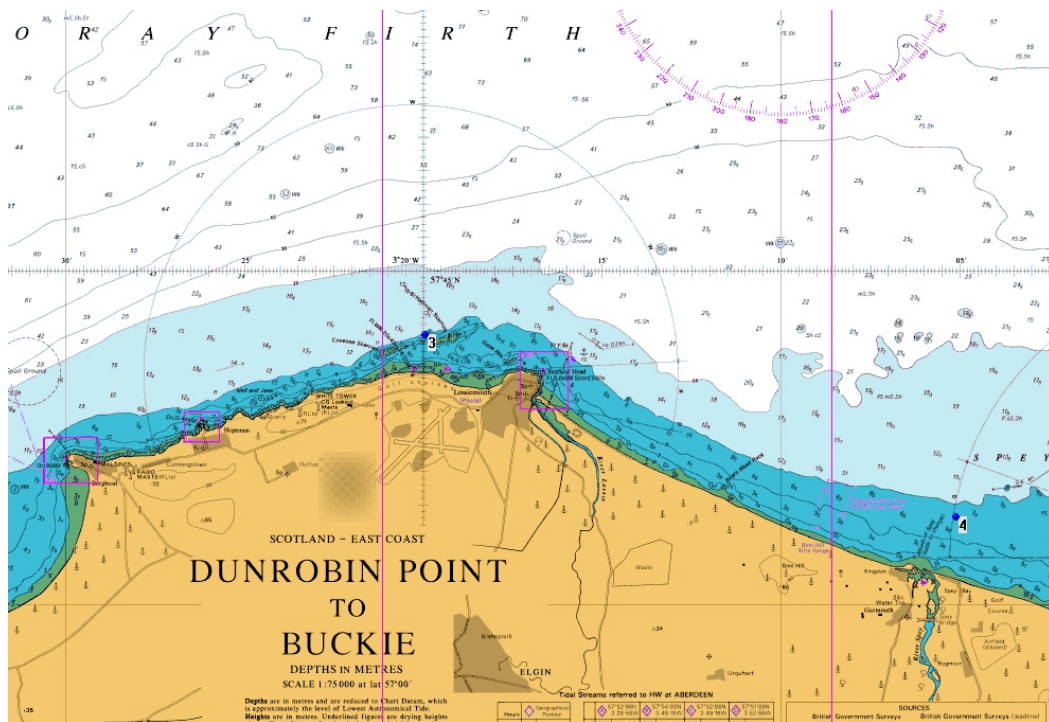
Mooring locations noted in this Notice to Mariners – Entrance to the Cromarty Firth.



Mooring locations noted in this Notice to Mariners – Inverness Firth / Chanonyr narrows.



Mooring locations noted in this Notice to Mariners – Inverness & Beaulieu Firth.



Mooring locations noted in this Notice to Mariners – Moray Firth.