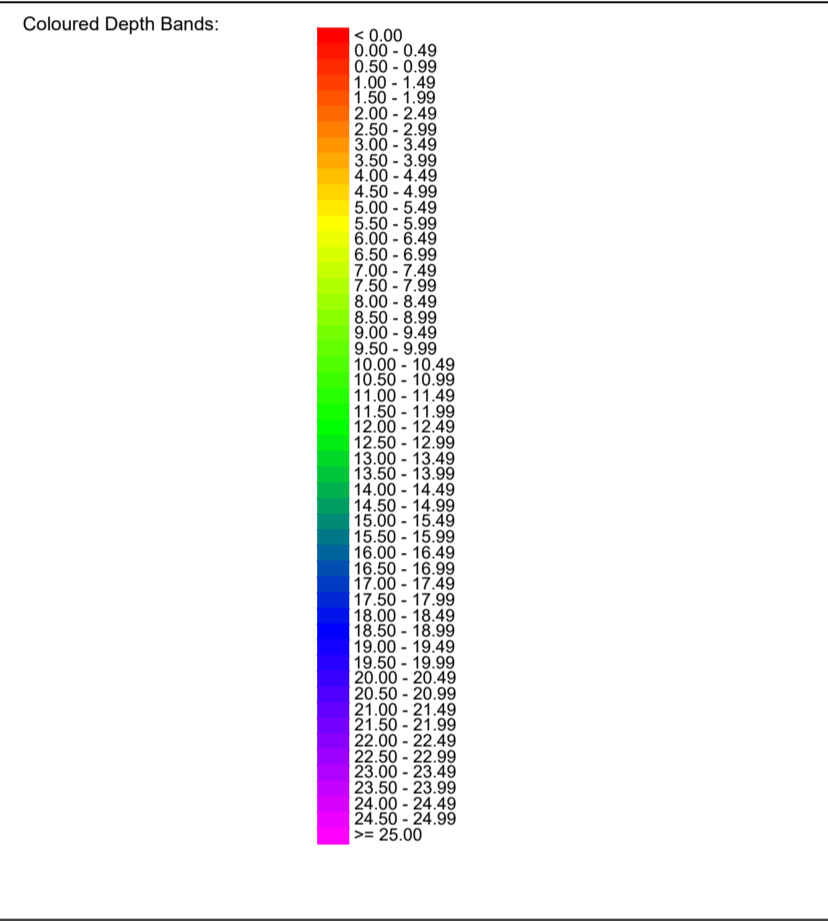


Legend 4.56

- Heights relative to ORDNANCE DATUM.
- Depths relative to CHART DATUM.
- Sea-bed contour relative to CHART DATUM.
- Mean High Water Springs
- Mean Low Water Springs

Survey Parameters & Equipment	
Survey Vessel:	Coastal Sensor II (MCA Cat III)
Positioning System:	Trimble Applanix POS MV
GPS Correction Source:	Trimble VRS NOW Network RTK
Echosounder:	R2Sonic 2024 Multibeam System 400kHz
Motion Compensator:	Trimble Applanix POS MV
Positioning System Spheroid & Datum:	ETRS89
Grid System:	National Grid of Great Britain
Geoid Model:	OSGM15
Transformation Parameters:	OSTN15
Spheroid:	Airy
Semi Major Axis:	6377563.396
Flattening (1/f):	299.324964600
Vertical Datum (Topographic):	Ordnance Datum
Vertical Datum (Hydrographic):	Chart Datum
Distance Unit:	Metre

Chart Datum is 2.10m below Ordnance Datum.  
The datum was established using corrected OS Rinec data and post-processed using Trimble Business Centre Software.



Notes:

Heights in metres above Chart Datum (Invergordon)			
MHWS	MHWN	MLWN	MLWS
4.3	3.3	1.6	0.7

CONTROL STATION COORDINATES (OD)			
STN	EASTING	NORTHING	LEVEL

Land + Hydrographic Surveys  
CHARTERED SURVEYORS  
Thomhouse Business Centre  
Ballot Road  
Irvine  
KA12 0HW  
Tel: 01294 313399 Fax: 01294 313389  
E-mail: mail@aspect-surveys.com  
Web: www.aspect-surveys.com

Client: PORT OF CROMARTY FIRTH  
SHORE ROAD  
INVERGORDON  
IV18 0HD

Project Title: MULTIBEAM BATHYMETRIC SURVEY  
SALTBURN PIER  
CROMARTY FIRTH

Project No:	A7000	Scale:	1:500
Surveyed date:	19th April 2019	Issued date:	23rd April 2019
Surveyed by:	KAK	Checked by:	CDT
Sheet No.:	2 of 3	Plot Scale:	1:1 @ A1